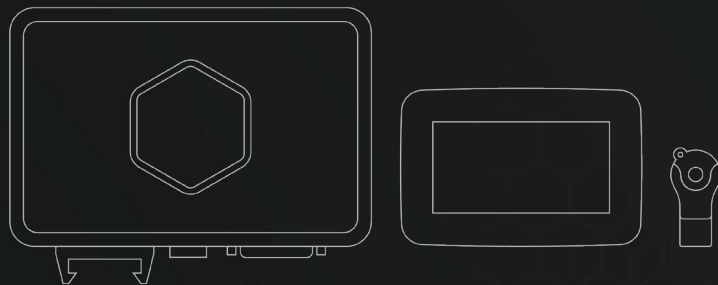


# ALIENTECH®



ALIENTECH CATALOGUE.

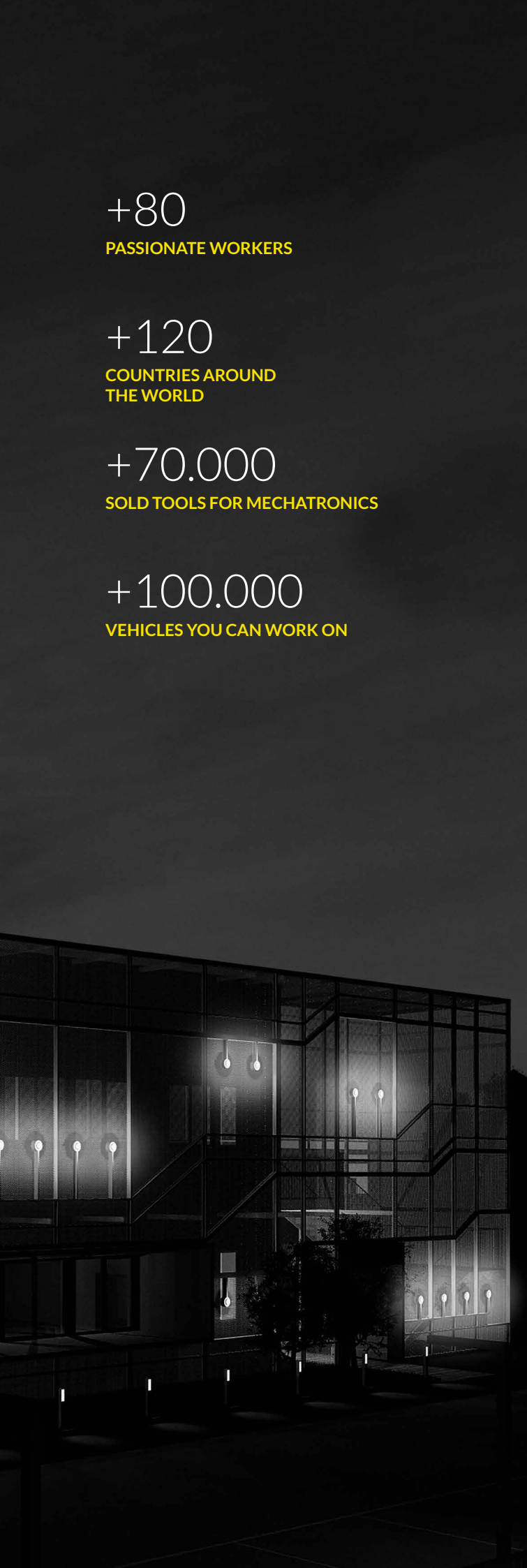
# Alientech

For thirty years, as a team, we've been developing, creating and producing the best tools and software for chiptuners and mechatronics. We have evolved during these years of hard work. From a dynamic start-up we have become a multinational firm with offices and dealers all over the world.

Our foresight has enabled us to always remain one step ahead, and conscious of our origins that drive us and make us what we are: a rapidly expanding economic reality, with great goals still to be achieved.







+80

PASSIONATE WORKERS

+120

COUNTRIES AROUND  
THE WORLD

+70.000

SOLD TOOLS FOR MECHATRONICS

+100.000

VEHICLES YOU CAN WORK ON

## Vision

We do not limit ourselves to what is possible now. We have a bold vision of the future of chiptuning and every day we work to develop the best technology shaping a future without boundaries. But that's not enough. We share the same driven passion.

All your work is our business, as is your customer satisfaction, new perspectives that open up in front of you, because you are guided by passion, the same that made you start and choose our tools.

This is the spark that makes you continue with determination and planning towards the future. Innovation, technology and genuine competition are the strong foundation in our environment. But, without passion, the result is incomplete. This is what makes us different from any other company in the sector: we never forget who we are and how we started.

## Worldwide presence

Alientech dealers are the only ones who can sell genuine Alientech product, safe and guaranteed. A widespread network who you can rely on and who will support you in the choice of right products for your needs.

Competence, technical knowledge and world-class tools distinguish all our dealers, the only ones to give you the security, reliability and the efficiency that Alientech itself can offer you.

We are all over the world. Hundreds of workshops to find our tools, thousands of people to turn to, to find out what Alientech can do for you. You could be the next dealer and a new Alientech reference point in the world!

ECU and TCU programming via OBD, boot and bench

# KESS3

All in one for a single tool.

Thanks to thirty years of experience and nearly three years of development, KESS3 is the most advanced engineering achievement ever conceived in the Chiptuning industry.

Alientech has made a significant breakthrough to create something unique and extraordinary, which has no equal in the market, in terms of functions, convenience, and versatility.

KESS3 has been developed to provide everyone, from the young engine enthusiast to the most specialized mechatronic technicians with a quick and simple interface to any engine control unit and automatic gearbox on the market.

Sensational performance, high operational flexibility and ease of use allow you to interface with engines and gearbox control units with a single tool.

## The most complete vehicle list ever

Hundreds of thousands of vehicles at your disposal and not only ECUs, but also TCUs equipped on cars, motorcycles, tractors and trucks and boats. To know all the vehicles we support, you can easily consult our Vehicle List.

Engine and gearbox control units, protocols and details of each vehicle will always be at your disposal.



Cars



Motorcycle



Tractor



Trucks



Boats

12.000

ECU e TCU to work on

8 LANGUAGES


Available in the software

+80.000

Vehicles to reprogram

+3.000

Available protocols



Very successful tools that have accompanied generations of mechanics over the years and mechatronics.

**1996** - ECU MANAGER

ECM becomes real: operating with DOS system, ECM is equipped with many features for identifying and modifying the engine management maps.

**1997** - BIT POWER

BitPower is created, the first EPROM emulator to edit electronically the carburetion.

**1997** - STEKIO

STEKIO is born, the tool that allows to check the stoichiometric air/fuel ratio.

**2002** - KESS

KESS is born, the tool that communicates with the engine control unit via diagnostic port.

**2004** - POWERGATE

The first individual remapping tool.

**2005** - BDM PRO

The first tool for reading, programming, making backup and restore of microprocessor, EEPROM and FLASH memory.

**2008** - ECM TITANIUM

ECM Titanium, evolution of ECM, improves the tuners' work, offering a software easy to use and always ready in a convenient flash drive with 8 GB of memory.

**2009** - KESSv2

KESSv2 is born, the technological evolution of the Alientech system dedicated to the serial communication with the engine control unit.

**2011** - KTAG

K-TAG is released, the new ECU programmer 'on bench' featuring together the communication lines J-TAG Nexus and Renesas, BDM Motorola MPC5xx, Bootloader Mitsubishi, Bootloader Infineon Tricore and Bootloader ST.

**2022** - KESS3

KESS3 is born. ECU and TCU programming via OBD, boot and bench. All working modes blend in a unique tool.

## Do you want to work on the control unit or on the vehicle? Choose your mode!

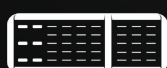
KESS3 combines 3 operating modes in one tool. OBD, Bench and Boot Mode. Configure it according to your needs and your work. Whatever your level and experience in remapping, KESS3 gives you the best.

With KESS3, everything changes and you will have a single Hardware without distinction. When the instrument is initialized, you decide which mode to configure. What if needs change? No problem, you can change the customization at any time.



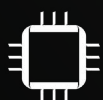
### OBD

With the OBD mode, you can easily access all the ECU data through the diagnostic socket.



### BENCH

A simple interface to the connector and you have complete access to the data of your ECU.



### BOOT

This mode allows you to access all system data areas. Read, Write and Clone

## Master or Slave? Operate as you want!

A single flexible device that can be configured as required, when the tool is initialized, you can choose the mode of operation.

### Master

The configuration that allows you to edit software calibrations in a completely autonomous way. The read files can be interpreted by your choice of remapping software.

### Slave

If you are not confident yet or sufficiently autonomous in editing software calibrations, thanks to this mode you can work with a network of trainers who will support you file requirements.

### Dealer network

If you intend to create your own slave network of tuners, you will have a reliable and easy to use tool.



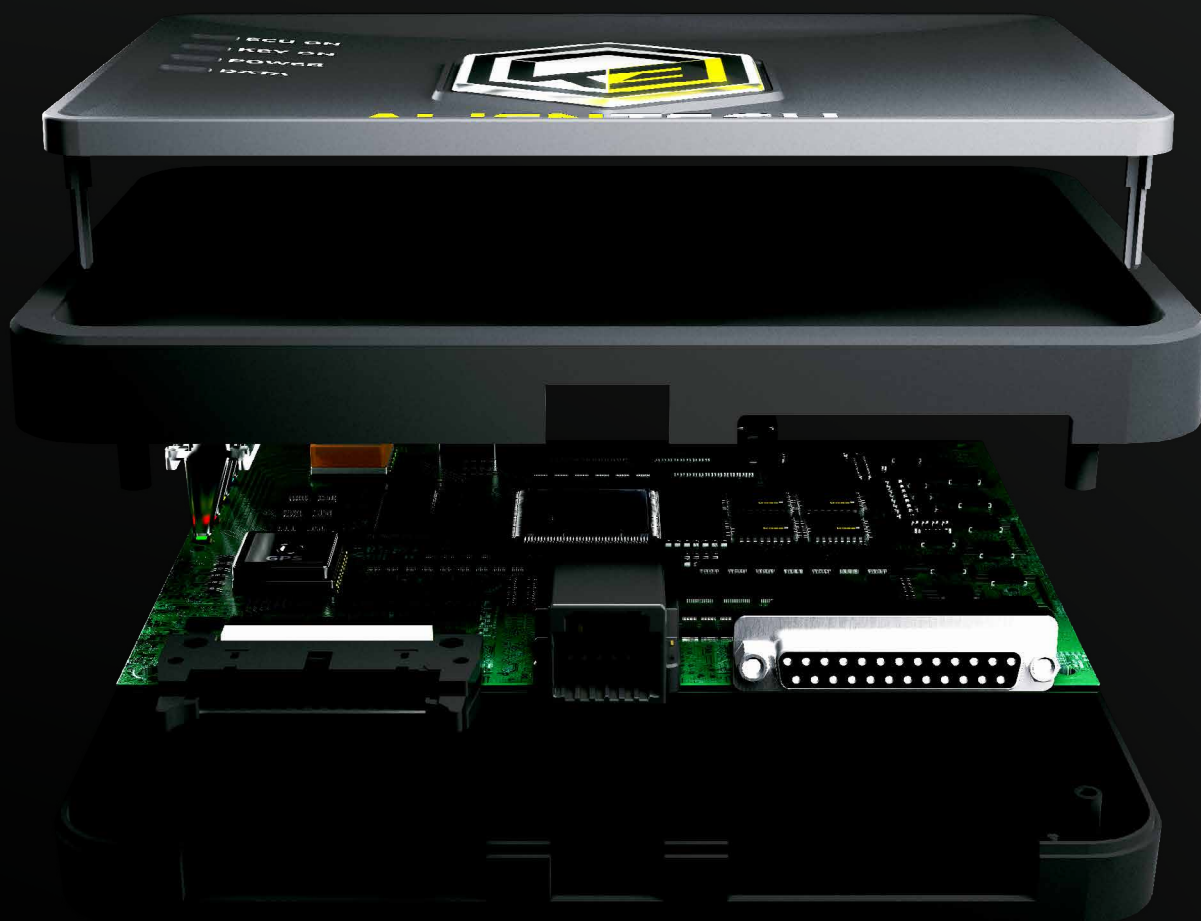


## A new electronic architecture. 30 years of experience and passion take shape.

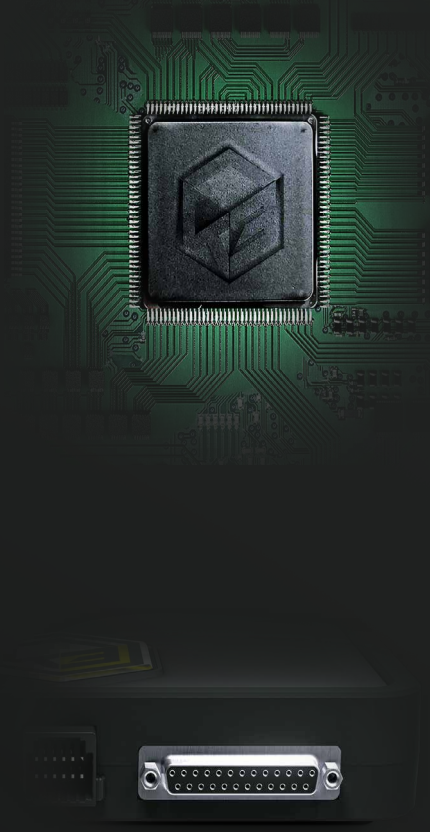
Since 1991 Alientech has been designing and developing tools for ECU remapping. Driven by the passion for excellence, Alientech has incorporated all their design experience in this new tool. Every aspect of KESS3 is carefully designed to achieve performance, operational flexibility, and ease of use.

Its renewed architecture exploits the full potential of each component.

New microprocessor, latest generation I/O interfaces, new built-in sensors and high-performance EEPROM and FLASH memories are the main features of KESS3







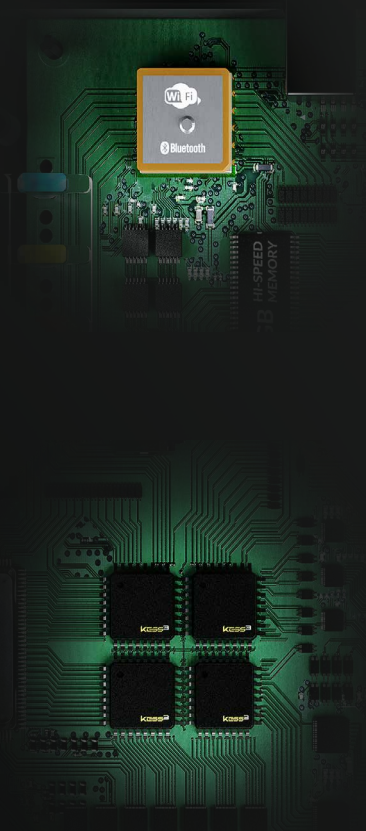
## The heart of KESS3: The CPU.

The most powerful microprocessor on the market.  
7 times more powerful than the previous generation.  
Pure power that can execute your commands reliably,  
faster and more efficiently.

## Lines of communication

KESS3 automatically and instantly recognizes the  
right communication line, to work faster, using only an  
OBD cable. Ethernet, FlexRay, CAN Bus, K-Line, L-line,  
J1850, J1708.

All the essential lines to start any operation inside the  
vehicle in total safety.



## Projected towards the future.

GPS, Accelerometer, Bluetooth, and Wi-Fi. All  
embedded in one platform.

The combination of these features and the constant  
technological developments that distinguish us will  
allow us to develop many new functions in the future.



## The performance.

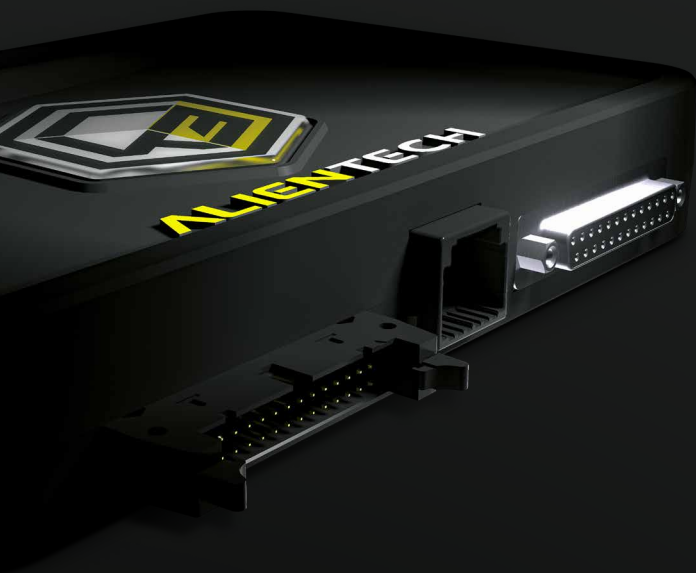
The renewed USB Full speed chip allows an up to  
10x increase in the performance of importing and  
exporting files to and from the KESS3.

But not only that, Alientech added a new web  
infrastructure to the new KESS3.

The result being, an Alientech cloud with improved  
speed and performance.

Innovative design

## Fiberglass shell. Resilience and Durability for your workshop.



KESS3 case design is completely new. Alientech has provided added value by researching and incorporating the best usable materials. Designed to offer you versatile and rugged mobility, thanks to the durability of the materials.

KESS3 is built around a fiberglass shell which gives it lightness and flexibility. An ergonomic shell, resistant to shocks and vibrations. An exceptionally strong tool that can be taken anywhere.

Fully updated software

**Alientech Suite. Such advanced new hardware inspired us to design software that would take full advantage of its potential.**

**A completely redesigned and new suite, in design and architecture**



### **New design**

New look, clean design, everything you need at your fingertips. Updated regularly to be functional, usable and easy.

### **Performance**

The new interactive “search” function will allow you to access the vehicle list or search for the microprocessor of your ECU in a few seconds. Downloading and updating the list are now instant

### **Support**

Direct access to the Alientech help desk and all development news.

### **User experience**

A completely renewed UX. An intuitive dashboard with improved access to the vehicle list with the ability to create a list of favorite vehicles and a view of the history of vehicles already interfaced

### **Vehicle database and control units**

List of protocols and vehicles updated daily and always available online. Technical instruction available in multi-language to support users during the most complex operations.

The best remapping software for ECU and TCU.

# ECM TITANIUM

One easy and intuitive software environment.

ECM TITANIUM is the remapping software developed by Alientech, that allows you to view and tune autonomously the maps of any original engine and transmission control unit file calibrations.

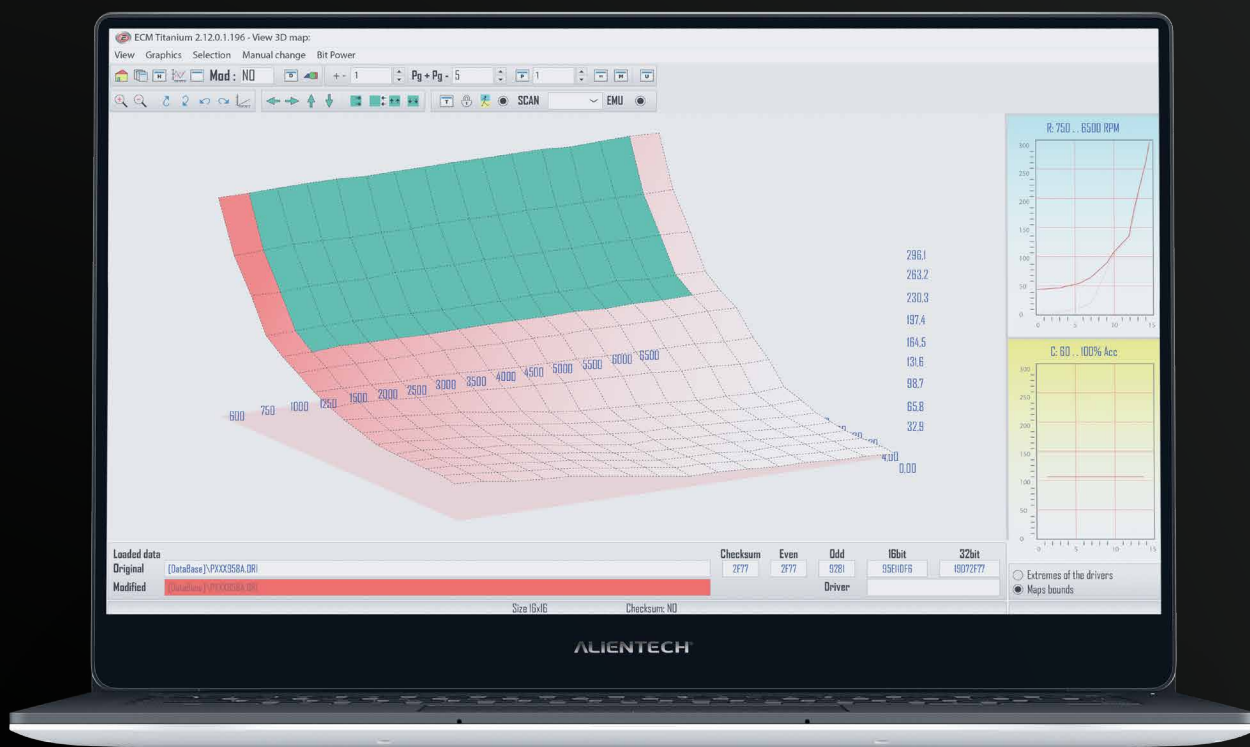
Remapping the control unit means modifying the parameters inside it, to improve the performance of the engine or transmission it controls.

The driving experience will be smoother and more pleasant. With a remap you can intervene on engine power, torque, acceleration, air, and fuel entering the cylinders, transmission shift points and much more, giving improved personality and character to the vehicle.

To remap an ECU, you need to read the original file stored inside, edit it with the software and then program it into the control unit. The reading and writing operation can be done with an OBD programmer or a bench programmer. Depending on the application and control unit type, you will know which method to use.

Each map has precise instructions that can be interpreted, modified, and made perfect, thanks to the remapping software.

These are modifications that only a professional can perform, with the best tools and equipment, to bring the desired results.





Configuration

## ECM TITANIUM full

### Unlimited recalibrations

A comprehensive solution in which you have dedicated technical assistance, up to 100 drivers a day available for download for cars, tractors, trucks, and boats, you can request Original Files and New Drivers, update the drivers list and the software. If you choose the full option, you have everything at your disposal and can remap whenever you want, carefree.



Configuration

## ECM TITANIUM credits

### Recalibrations on demand

Activate your ECM TITANIUM software through Credits that you use to choose the operations that interest you the most. Do you need a motorbike or gearbox driver? Use some of your credits only! You maintain control over what you do and, depending on your needs, you can expand your "credits package".

### Specialized technical assistance

A team able to solve problems as quickly as possible, having a direct contact, assigning technical and commercial reference to each individual customers, to create a relationship of trust in time.



Immediate

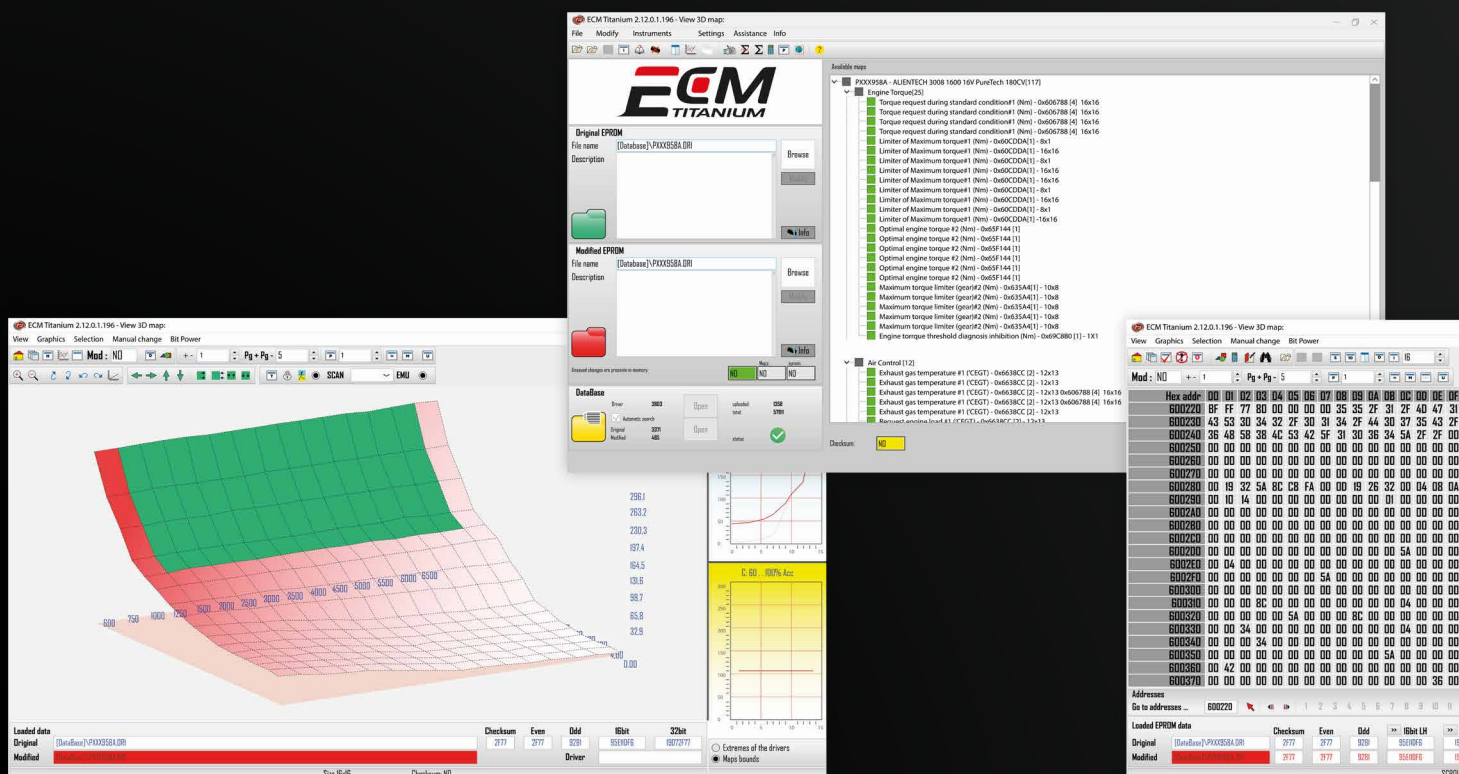
## Raise the remapping standard.

ECM TITANIUM is the most complete remapping software. Versatile, reliable, and easy to use, compatible with the original files of all vehicles, and intuitive: from the first window to the last you know where you are and what you can do.

Intuitive

## Meet every operational need. Online and Offline, always efficient recalibrations.

You can download the updated Drivers list directly from the Alientech database, in addition to any updates of the software itself. Once done, the drivers are yours forever and you can also use them Offline, thus satisfying your every need of work. The goal is to give you easy and efficient software, that you can use Online and Offline as required. You decide how to manage your work, we give you the right tools to do it.



Complete

# Work autonomously.

## One easy and intuitive software environment.

Through ECM TITANIUM you have at your disposal a database with over 100.000 Drivers and original files available for download. Every day our technical team produces new ones or improves the existing ones.

## Different editing tools at your disposal.

The interpretation tool works by selecting a minimum of two cells and allows to apply a range of values, modifying only on extreme horizontal and/or vertical parameters.

The “edit value”, is a command similar to the “interpretation value” override, but which differs in the number of selectable cells, works with one or more cells indifferently and will always overwrite the same value in all selected cells.

## The Drivers guide you to understand the maps inside the original file.

Only a small part of which are relevant for calibration and and, through the information contained in the Driver, you can modify the correct maps to obtain perfect recalibrations.

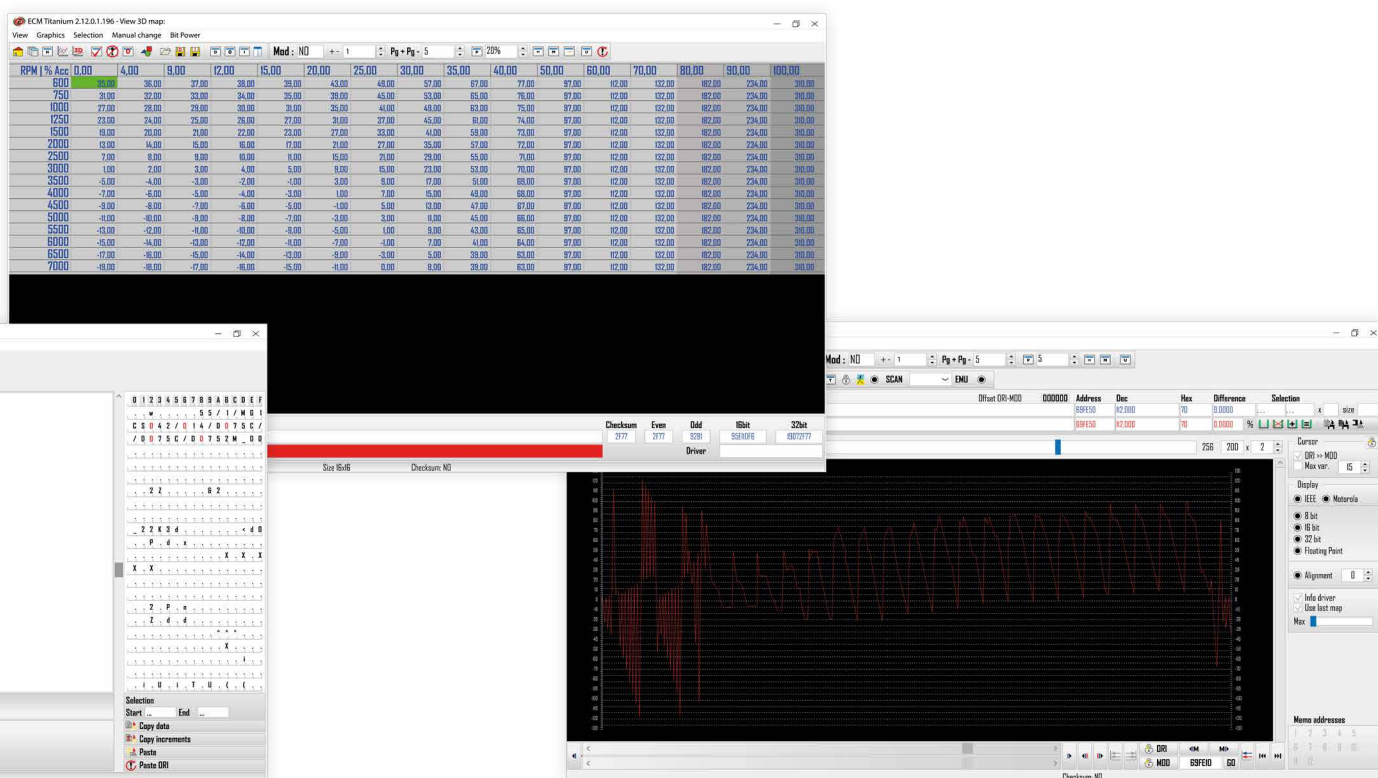
## Let us guide you by ECM TITANIUM Driver.

The Driver interprets the Original File data section in which you can find the engine management maps, injection system, ignition advance, rpm, acceleration percentage, turbo pressure and much more.

Everything you need is available to you.

Through the exclusive function “Driver Research” you can automatically find all the information to remap the Original File.

You will quickly learn how to move between the parameters, modify them and create the perfect calibration.



Reach your customers all over the world.

# Powergate3+

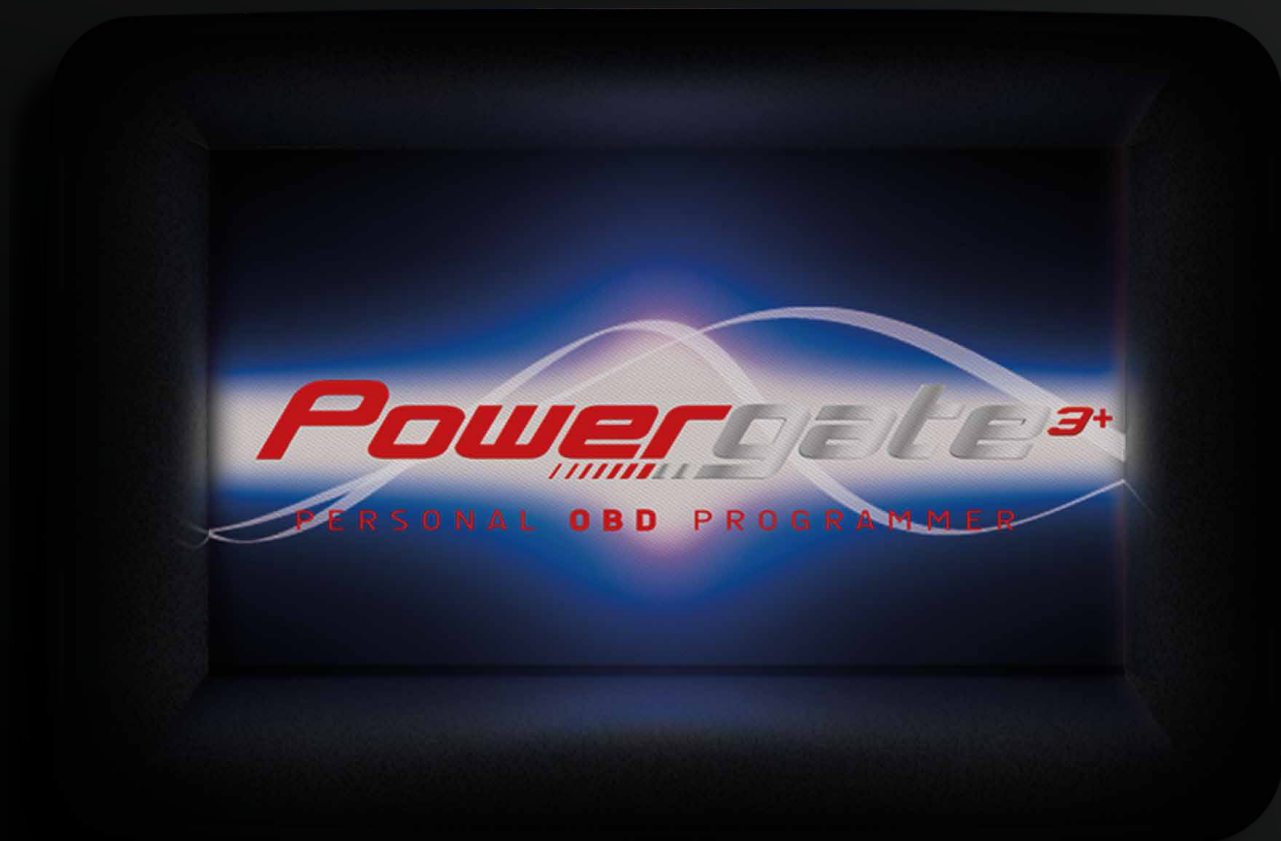
Become the most famous tuner in the world

Powergate3+ is the ECU Programming Unit with touchscreen, that allows your customer to remap a vehicle's ECU independently, using the maps that you have preloaded.

It is the right solution to reach your customers worldwide. Configure and customize Powergate3+, send it to a customer wherever he is and make his driving experience more personal and exciting.

Powergate3+ can make you the most demanded tuner in the world. It is up to you. The very way in which the tool was conceived shows just how easy it is to start or increase a potentially very interesting business.

The simplicity of reading and writing via OBD: never been so fast and intuitive; the possibility to customize its tool with graphics, logos and language, to create your customer network in a few steps and, especially, the ability to satisfy every request or need.





## There is no User without Decoder.

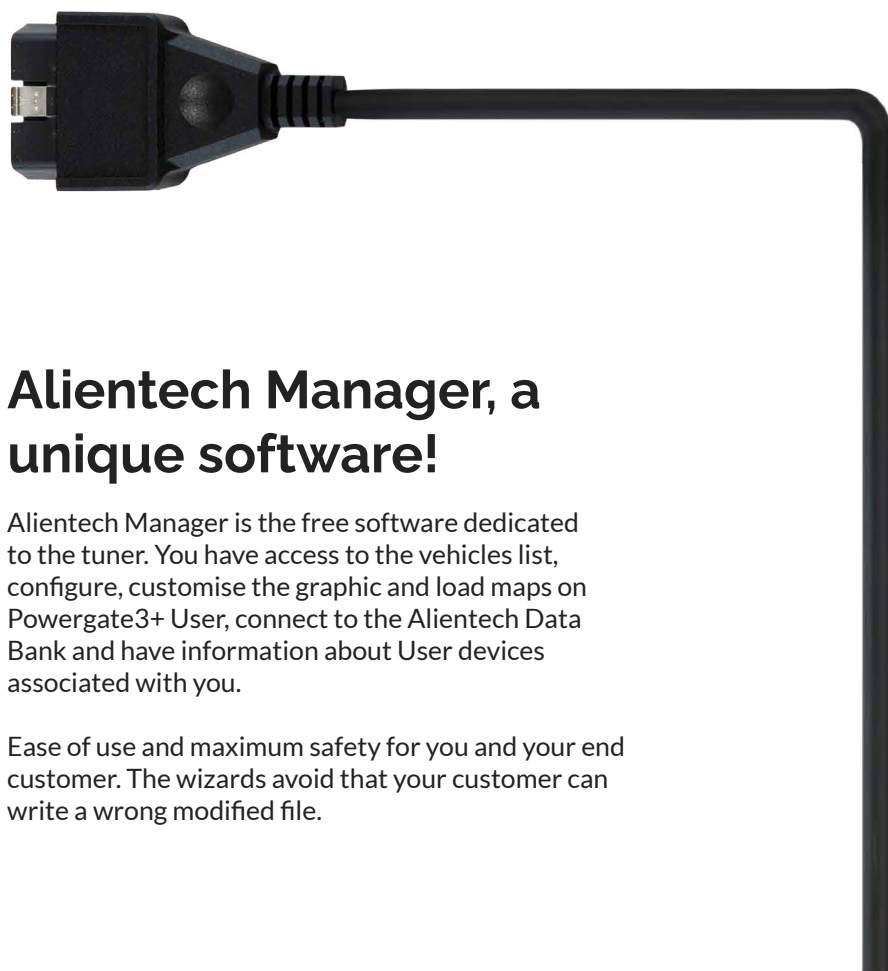
Powergate3+ is Decoder or User. The tuner purchase a single Decoder and can associate to this countless User tools, configured and preloaded with the modified files.

### **POWERGATE3+ DECODER**

It's the tool that allows you to associate to your customer code and to configure all the User Powergate3+ to sell your customers. All the files you modified and uploaded to the device are encoded to protect your work and you will have a modified file internal database.

### **POWERGATE3+ USER**

It's the tool which is sent to the end customer. It contains the Original File of the ECU and the modified maps (up to 5 different levels of elaboration), that the customer can write on its vehicles.



## Alientech Manager, a unique software!

Alientech Manager is the free software dedicated to the tuner. You have access to the vehicles list, configure, customise the graphic and load maps on Powergate3+ User, connect to the Alientech Data Bank and have information about User devices associated with you.

Ease of use and maximum safety for you and your end customer. The wizards avoid that your customer can write a wrong modified file.

Raise the level of your profession.

# Academy

Alientech Academy is what you need to stand out.

We give you the right tools to best address every request from your customers, but not only. We also teach you to use them to their full potential: a more conscious and professional use to distinguish yourself from those who choose to work roughly, without passion or honesty.

The only way to stand out is the knowledge and we give you the opportunity to have it by following one of our training courses.

Whatever courses you need - in classroom, virtual, online - the goal remains the same: your business will have a great evolution, because you will know how to take advantage of the technical equipment, offering your customers efficient and fast services.

Alientech Academy is a community of enthusiasts: our trainers, those who organize the training courses, those who manage every detail of teaching are driven by genuine passion, a driving force that involves anyone who chooses to be part of it. The same will be for you. Unleash your passion and start training with us!

**10**

Spoken languages

**15**

Training locations

**+100**

Scheduled training sessions  
(annual basis)

**+3000**

Formed chiptuner



### **Classes**

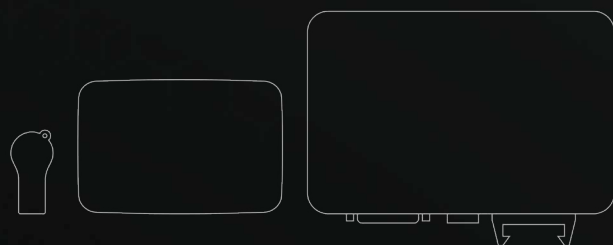
Multi-day complete sessions in which you can deepen your knowledge both theoretical and practical. Learn to use the Alientech tools and software, follow the practical trainings, participate to the classes.

### **Online Courses**

Practices on dozens of cars, motorcycles, trucks, tractors, and gearbox ECUs, equipped on thousands of vehicles. Follow the practical example of an ECU, to complete the elaboration of the vehicle in analysis.

### **Virtual Classes**

Insights on the ECUs to learn to remap without risks and safely. You can chat live with the trainer, who explains you every step of the chiptuning course that you are following.



**ALIENTECH®**

info@alientech.to  
alientech-tools.com  
+39 0161 801025

Via dei Cordari, 1 Trino (VC) 13039 Italia

